

# AIRPORT LAYOUT PLAN SET

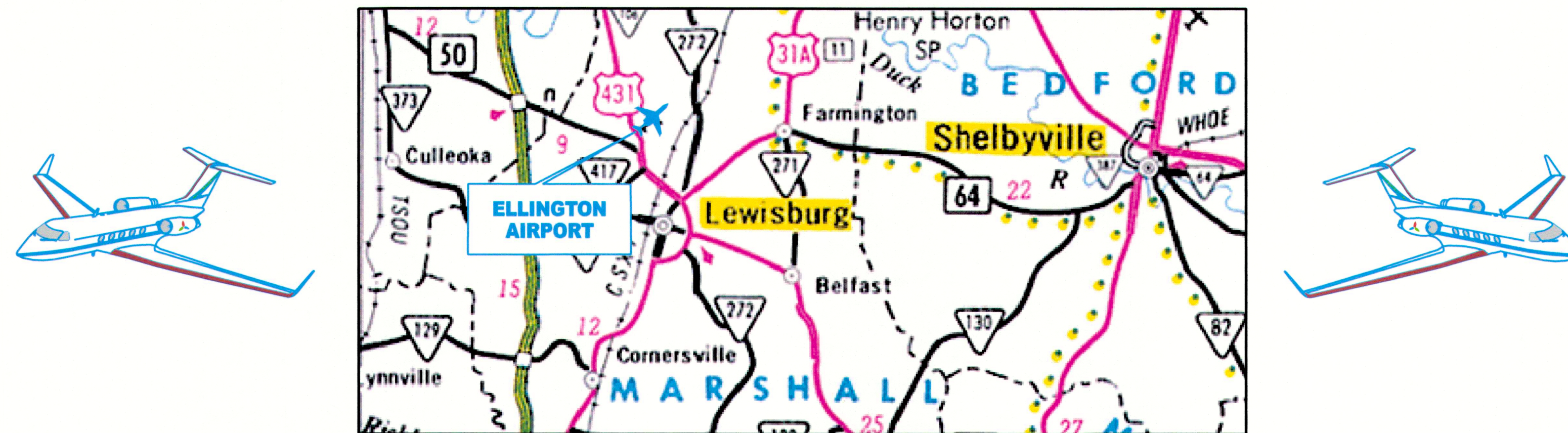
## FOR THE

# ELLINGTON AIRPORT

### TAD NO. 59-555-0146-18

### PREPARED FOR THE

## CITY OF LEWISBURG



VICINITY MAP

1877 FRANKLIN PIKE  
LEWISBURG, TN 37091

#### STATE OF TENNESSEE

HONORABLE BILL LEE, GOVERNOR

#### DEPARTMENT OF TRANSPORTATION

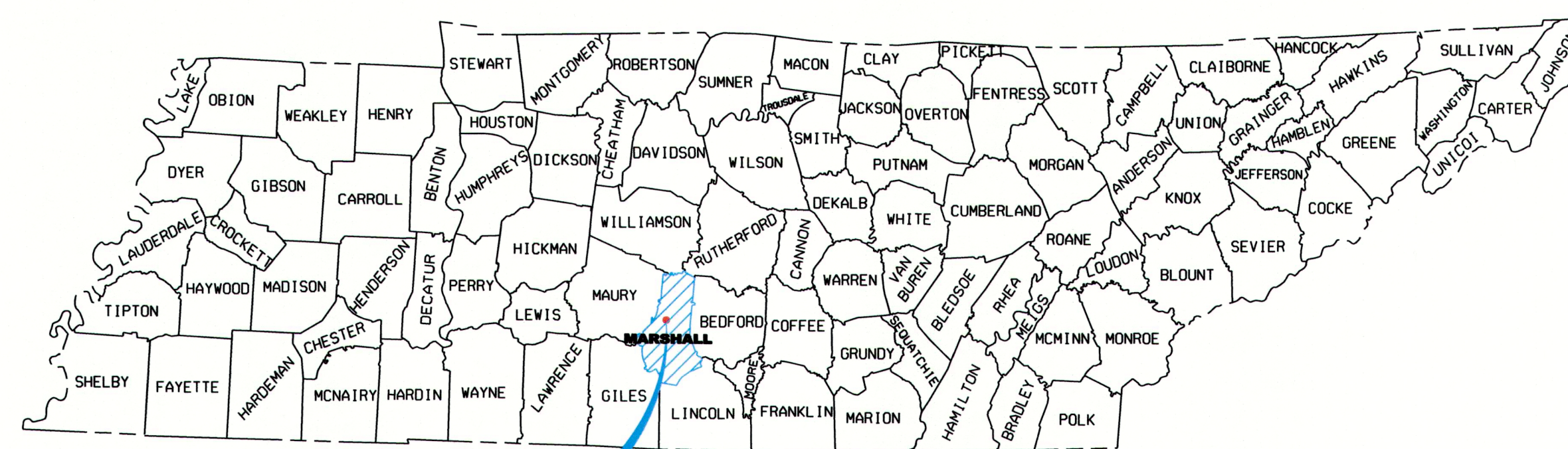
CLAY BRIGHT, COMMISSIONER

#### TENNESSEE AERONAUTICS DIVISION

MICHELLE FRAZIER, DIRECTOR  
J. P. SAALWAECHTER, P.E., CHIEF ENGINEER  
STEVE UPSHAW, PROJECT MANAGER

#### CITY OF LEWISBURG

JIM BINGHAM, MAYOR  
KENT STEWMON, AIRPORT MANAGER  
BUCK BEARD, INTERIM CITY MANAGER  
TERRY JACKSON, AIRPORT BOARD PRESIDENT



ELLINGTON AIRPORT

LOCATION MAP

#### INDEX OF DRAWINGS

##### SHEET NO.

##### TITLE

1	COVER SHEET
2	AIRPORT LAYOUT DRAWING
3	TERMINAL AREA PLAN
4	AIRSPACE DRAWING
5	INNER APPROACH 2 SURFACE DRAWING
6	INNER APPROACH 20 SURFACE DRAWING
7	LAND USE MAP
8	AIRPORT CAPITAL IMPROVEMENT PLAN
	EXHIBIT "A" AIRPORT PROPERTY INVENTORY MAP



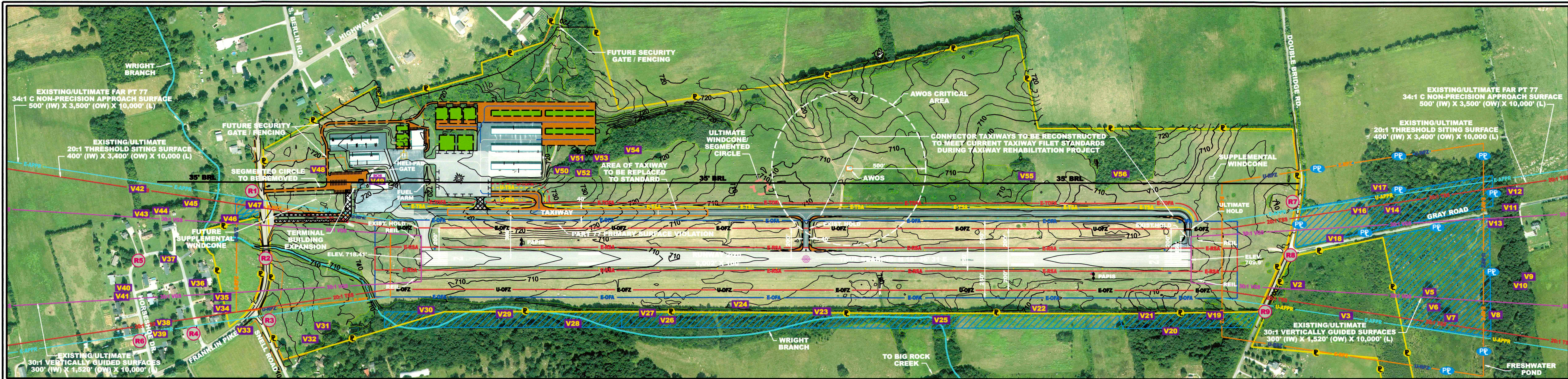
PDC CONSULTANTS, LLC.

133 Holiday Court  
Suite 102  
Franklin, TN 37067

Phone: (615) 614-0121  
Fax: (615) 614-0124

CONSULTANTS





RUNWAY DATA				
ITEM	RUNWAY 2		RUNWAY 20	
	EXISTING	ULTIMATE	EXISTING	ULTIMATE
EFFECTIVE GRADIENT (%)	0.2%	SAME	0.2%	SAME
MAXIMUM GRADE CHANGE	0.5%	SAME	0.5%	SAME
WIND COVERAGE (%)	98.55%	SAME	98.55%	SAME
MAX. ELEVATION (NAVD88)	718.41'	SAME	709.9'	SAME
RUNWAY LENGTH	5,002'	SAME	5,002'	SAME
RUNWAY WIDTH	100'	100'	100'	100'
DISPLACEMENT	NONE	NONE	NONE	NONE
SURFACE TYPE	ASPHALT	SAME	ASPHALT	SAME
PAVEMENT STRENGTH	SWL	41,000	TBD	41,000
	DWL	41,000	TBD	41,000
APPROACH SURFACE SLOPE	34:1	SAME	34:1	SAME
APPROACH VISIBILITY MINIMUMS	1 MILE	SAME	7/8 MILE	SAME
VISUAL APPROACH AIDS	REIL VASI	SAME	REIL VASI	SAME
RUNWAY DEPARTURE SURFACE	YES	SAME	YES	SAME
INSTRUMENT APPROACH AID	LPV / LNAV / GPS	SAME	LPV / LNAV / GPS	SAME
LIGHTING	MIRL	SAME	MIRL	SAME
RUNWAY MARKING	NPI	SAME	NPI	SAME
FAR PART 77 CATEGORY	CN(P)	SAME	CN(P)	SAME
RUNWAY END COORDINATES (NAD 83)	LATITUDE	N 35° 30' 01.60"	LATITUDE	N 35° 30' 48.61"
	LONGITUDE	W 86° 48' 23.41"	LONGITUDE	W 86° 48' 04.50"
DISPLACED THRESHOLD COORDINATES (NAD 83)	LATITUDE	NONE	LATITUDE	NONE
	LONGITUDE	NONE	LONGITUDE	NONE
RUNWAY END ELEVATIONS (NAVD88)	718.4'	SAME	709.9'	SAME
DISPLACED THRESHOLD ELEVATIONS (NAVD88)	NONE	NONE	NONE	NONE
TDZ ELEVATION (NAVD88)	711.7'	SAME	709.9'	SAME
RUNWAY DESIGN CODE (RDC)	B-II-5000	SAME	B-II-4000	SAME
APPROACH REFERENCE CODE (APRC)	B-II-5000	SAME	B-II-4000	SAME
DEPARTURE REFERENCE CODE (DPRC)	B-II	SAME	B-II	SAME
AERONAUTICAL SURVEY REQUIRED	VERTICALLY GUIDED	SAME	VERTICALLY GUIDED	SAME

RUNWAY SAFETY AREA INVENTORY					
RUNWAY END NUMBER	STANDARD RSA		ACTUAL RSA		RSA DETERMINATION
	LENGTH BEYOND RWY	WIDTH	LENGTH BEYOND RWY	WIDTH	
RUNWAY 2	300'	150'	300'	150'	NO VIOLATIONS
RUNWAY 20	300'	150'	300'	150'	NO VIOLATIONS

TRAVERSE WAY						
#	NAME	GROUND ELEVATION (FT.)	TOP * ELEVATION (FT.)	APPROACH SURFACE ELEVATION (FT.)	PENETRATION (FT.)	PROPOSED ACTION
R1	FRANKLIN PIKE	721.4'	736.4'	745.3'	NONE	NONE
R2	FRANKLIN PIKE	718.3'	733.3'	742.1'	NONE	NONE
R3	FRANKLIN PIKE	718.1'	733.1'	742.9'	NONE	NONE
R4	HORSESHOE DR.	720.0'	735.0'	755.4'	NONE	NONE
R5	HORSESHOE DR.	724.0'	739.0'	766.1'	NONE	NONE
R6	HORSESHOE DR.	723.0'	738.0'	765.4'	NONE	NONE
R7	DOUBLE BRIDGE RD.	708.4'	723.4'	724.4'	NONE	NONE
R8	GRAY ROAD	702.8'	717.8'	722.4'	NONE	NONE
R9	DOUBLE BRIDGE RD.	702.8'	717.8'	717.9'	NONE	NONE



**PDC CONSULTANTS, LLC.**  
133 Holiday Court  
Suite 102  
Franklin, TN 37067  
Phone: (615) 614-0121  
Fax: (615) 614-0124

AIRPORT DATA		
	EXISTING	ULTIMATE
AIRPORT ELEVATION (MSL)	718.4'	SAME
AIRPORT REFERENCE POINT COORDINATES (NAD 83)	LAT. N 35° 30' 25.11" LONG. W 86° 48' 13.99"	LAT. N 35° 30' 48.61" LONG. W 86° 48' 04.50"
MEAN MAX. TEMP. OF HOTTEST MONTH	JULY - 90° F	SAME
AIRPORT TERMINAL AREA NAVADS OWNED AND OPERATED BY LVG	ROTATING BEACON, PRIMARY LIGHTED WINDCONE / SEG. CIRCLE	SAME
AIRPORT REFERENCE CODE	B-II	B-II
DESIGN AIRCRAFT	FALCON 50	FALCON 50
FUEL	JET A / 100LL	SAME

RUNWAY SAFETY AREA DIMENSIONS		
	WIDTH	LENGTH BEYOND RUNWAY ENDS
EXISTING	150'	300'
ULTIMATE	SAME	SAME

RUNWAY OBJECT FREE AREA DIMENSIONS		
	WIDTH	LENGTH BEYOND RUNWAY ENDS
EXISTING	500'	300'
ULTIMATE	SAME	SAME

RUNWAY PROTECTION ZONE DIMENSIONS				
RUNWAY 2	INITIAL	INNER WIDTH	OUTER WIDTH	LENGTH
		500'	700'	1,000'
RUNWAY 20	INITIAL	SAME	SAME	SAME
		1,000'	1,510'	1,700'
ULTIMATE	INITIAL	SAME	SAME	SAME
		1,000'	1,510'	1,700'

RUNWAY OBSTACLE FREE ZONE DIMENSIONS		
	WIDTH	LENGTH BEYOND RUNWAY ENDS
EXISTING	400'	200'
ULTIMATE	400'	200'

MODIFICATIONS OF DESIGN STANDARDS			
NO.	STANDARD MODIFIED	FAA STANDARDS	PROPOSED ACTION
1	NONE REQUIRED	N/A	NONE REQUIRED

TAD APPROVAL BLOCK		
CONDITIONALLY APPROVED John Paul Swallow 3-17-21 State Block Grant Program Tennessee Dept. of Transportation Subject to comments in Approval Letter		

OBSTRUCTION DATA				
PT 77 - 7:1 TRANSITIONAL SURFACE (TS), 34:1 APPROACH SURFACE (AS)				
V #	DESCRIPTION	OBJECT ELEVATION	34:1 SURFACE VIOLATION	30:1 VGS VIOLATION
V1	* TREE (AS)	-	-	-
V2	* TREE (AS)	723.47'	2.01'	0.7'
V3	* TREE (AS)	727.98'	3.43'	-
V4	* TREE (AS)	-	-	-
V5	* TREE (AS)	763.99'	14.61'	8.97'
V6	* TREE (AS)	761.78'	11.80'	-
V7	* TREE (AS)	759.26'	6.29'	-
V8	* TREE (AS)	761.84'	0.93'	-
V9	* TREE (AS)	779.07'	10.70'	2.52'
V10	* TREE (AS)	771.24'	4.21'	3.78'
V11	* TREE (AS)	780.70'	15.96'	-
V12	* TREE (AS)	771.92'	6.17'	-
V13	* TREE (AS)	764.27'	3.40'	23'
V14	* TREE (AS)	745.85'	3.56'	-
V15	* TREE (AS)	-	-	-
V16	* TREE (AS)	749.67'	13.30'	-
V17	* TREE (AS)	751.64'	4.92'	-
V18	* TREE (AS)	734.39'	3.81'	.88'
V19	* TREE (AS)	744.96'	18.62'	-
V20	* TREE (AS)	779.17'	37.73'	-
V21	* TREE (AS)	749.06'	24.61'	-
V22	* TREE (AS)	766.12'	40.02'	-
V23	* TREE (AS)	746.41'	18.47'	-
V24	* TREE (AS)	734.39'	12.45'	-
V25	* TREE (AS)	747.30'	23.27'	-
V26	* TREE (AS)	755.33'	15.06'	-
V27	* TREE (AS)	752.99'	22.84'	-
V28	* TREE (AS)	768.88'	30.54'	-
V29	* TREE (AS)	779.29'	42.09'	-
V30	* TREE (AS)	768.30'	36.78'	-
V31	* TREE (AS)	763.10'	13.28'	-
V32	* TREE (AS)	771.03'	19.20'	-
V33	* TREE (AS)	756.36'	3.76'	-
V34	* TREE (AS)	765.86'	15.15'	-
V35	* TREE (AS)	765.85'	15.47'	-
V36	* TREE (AS)	777.63'	22.56'	17.66'
V37	* TREE (AS)	774.12'	12.82'	7.09'
V38	* TREE (AS)	779.03'	17.38'	-
V39	* TREE (AS)	772.34'	4.87'	-
V40	* TREE (AS)	764.06'	15.31'	8.58'
V41	* TREE (AS)	785.22'	16.08'	9.30'
V42	* TREE (AS)	790.50'	23.07'	-
V43	* TREE (AS)	785.40'	20.56'	-
V44	* TREE (AS)	774.55'	14.09'	-
V45	* TREE (AS)	767.99'	12.77'	-
V46	* TREE (AS)	757.11'	5.57'	-
V47	* UTILITY POLE	744.93'	1.44'	-
V48	* TREE (AS)	787.14'	30.18'	-
V49	* BUILDING	752.50'	4.93'	-
V50	* TREE (AS)	783.11'	20.34'	-
V51	* TREE (AS)	796.12'	23.84'	-
V52	* TREE (AS)	785.94'	20.92'	-
V53	* TREE (AS)	777.38'	3.13'	-
V54	* TREE (AS)	778.17'	0.51'	-
V55	* TREE (AS)	767.08'	15.61'	-
V56	* TREE (AS)	761.20'	5.19'	-

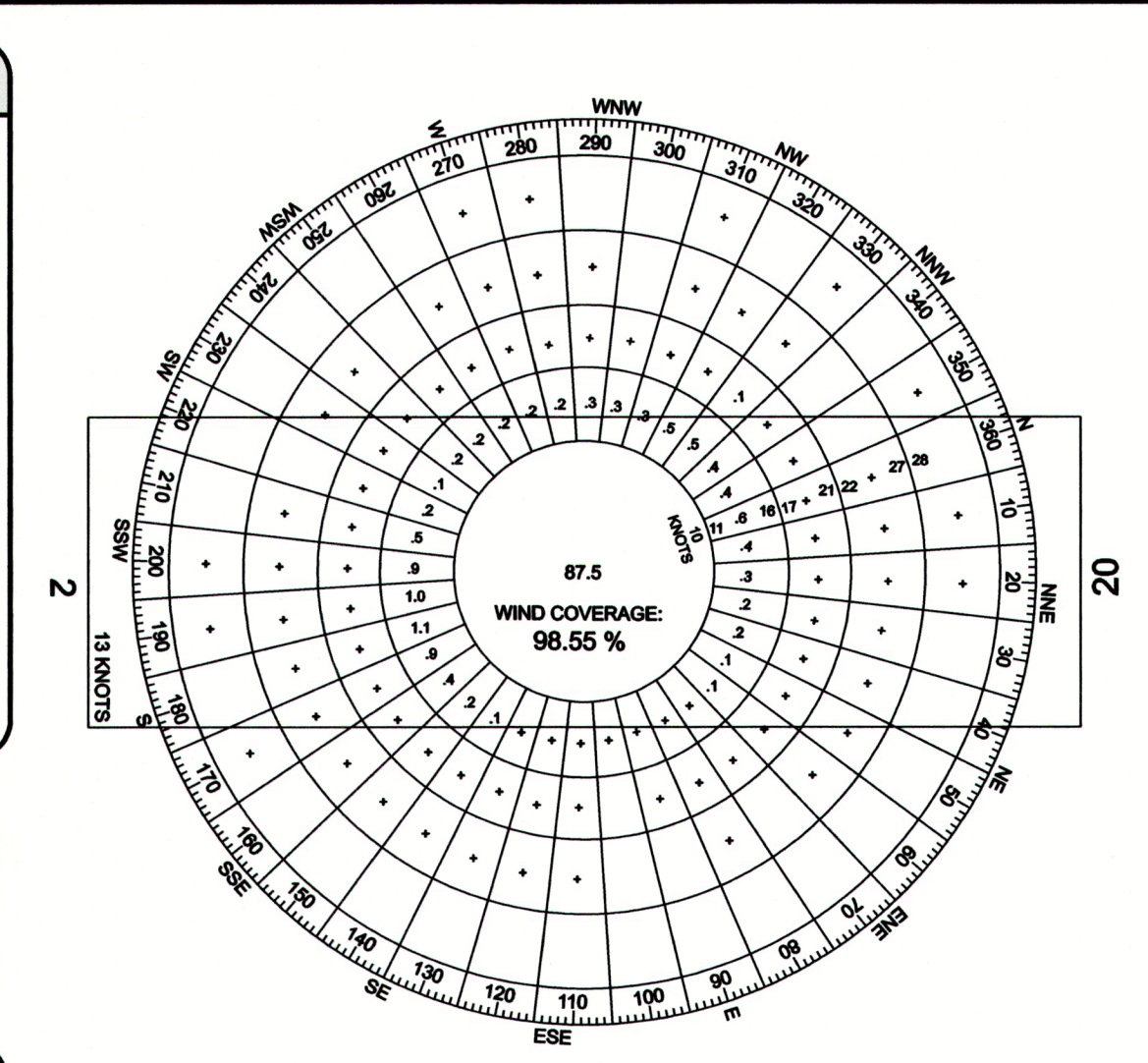
\* TREES HAVE SINCE BEEN REMOVED AND ARE NO LONGER VIOLATIONS.

- ### GENERAL NOTES
- REFER TO TERMINAL AREA PLAN FOR ON-AIRPORT BUILDING IDENTIFICATION.
  - REFER TO INNER APPROACH PLANS FOR PENETRATIONS TO APPROACH SURFACES.
  - PROPERTY LINE LOCATION SHOWN IS APPROXIMATE.
  - NO OBSTACLE FREE ZONE PENETRATIONS.
  - NO THRESHOLD SITING SURFACE OBJECT PENETRATIONS.
  - ALL GVSGI SITING MUST BE IN ACCORDANCE WITH FAA GUIDANCE.
  - ALL COORDINATES BASED ON NAD 83; ELEVATIONS BASED ON NAVD 88.
  - PAVEMENT STRENGTH IS LISTED AS REPORTED ON AIRPORT / MASTER RECORD.
  - WETLANDS ARE DEPICTED AS SHOWN ON USFWS WETLAND INVENTORY.
  - EXISTING RUNWAY AND TAXIWAY WIDTHS EXCEED FAA STANDARDS WHICH WILL REQUIRE ADDITIONAL FUNDING CONSIDERATION, PER TDOT.
  - EXISTING AIRPORT FENCING INCLUDES BOTH 4' STOCK FENCE AND 4' CHAINLINK FENCE.
  - EXISTING AVIGATION EASEMENTS FOR RUNWAY 20 REFLECT CH RPZ DIMENSIONS.
  - OWNERSHIP OF RPZ BEYOND LIMITS OF APPROACH SURFACE REQUIRED IN FEE SIMPLE OR EASEMENT PER T.A.D. GUIDANCE.
  - REFER TO FAA AC 150/5300-13 FOR AIRPORT STANDARDS DIMENSIONS.
  - SEE TERMINAL AREA PLAN FOR TAXIWAY DATA TABLE.

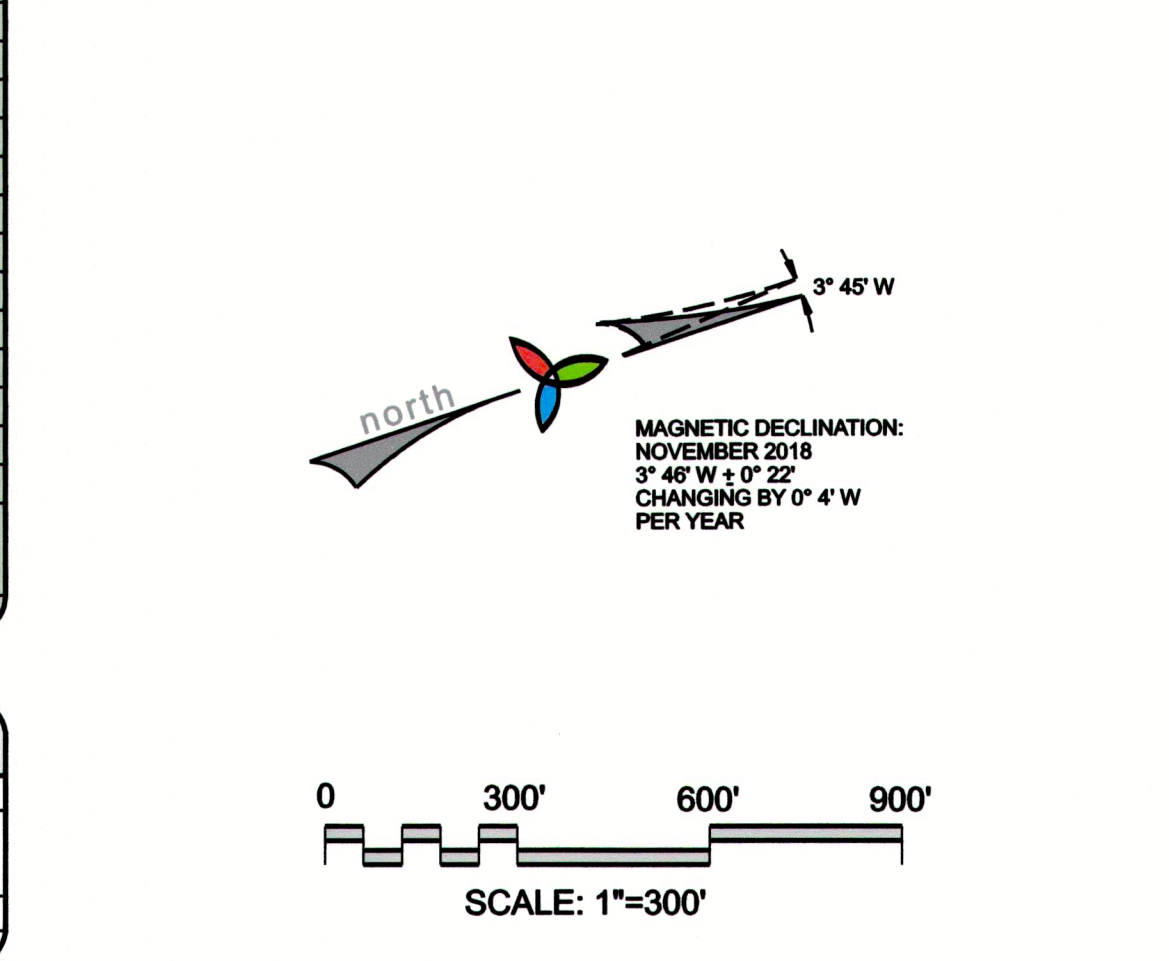
APPROVAL BLOCK	
BUCK BEARD, INTERIM CITY MANAGER	DATE

LEGEND		
	EXISTING	ULTIMATE
AIRPORT MARKINGS		
RUNWAY SAFETY AREA (RSA)	E-RSA	U-RSA
RUNWAY OBJECT FREE AREA (ROFA)	E-ROFA	U-ROFA
RUNWAY OBSTACLE FREE ZONE (ROFZ)	E-OFZ	U-OFZ
RUNWAY PROTECTION ZONE (RPZ)	E-RPZ	U-RPZ
FAR PART 77 APPROACH SURFACE	E-APPS	U-APPS
TAXIWAY OBJECT FREE AREA (TOFA)	E-TOFA	U-TOFA
TAXIWAY SAFETY AREA (TSA)	E-TSA	U-TSA
35' BUILDING RESTRICTION LINE (BRL)		SAME
AIRPORT PAVEMENT		
AIRPORT REFERENCE POINT	SEE PHOTO	SAME
AIRPORT BUILDINGS		
AIRPORT PROPERTY LINE		
AVIGATION EASEMENT		
FENCE (SEE NOTE 11)		
* GROUND ELEVATIONS CONTOURS	1025	1025
PAVEMENT OR BUILDING TO BE REMOVED	NONE	
GVSGI (PAPs)		
RUNWAY END IDENTIFIER LIGHTS (REILs)		
WINDCONE		
BEACON		
WINDCONE AND SEGMENTED CIRCLE		
PART 77 VIOLATIONS		

DECLARED DISTANCES				
RUNWAY END ID	EXISTING / ULTIMATE			
	TORA	TODA	ASDA	LDA
RW 03	5,002'	5,002'	5,002'	5,002'
RW 21	5,002'	5,002'	5,002'	5,002'



**ALL WEATHER WIND ROSE**  
SOURCE: NATIONAL CLIMATIC DATA CENTER  
ASHEVILLE, NC  
NASHVILLE INTERNATIONAL AIRPORT  
NASHVILLE, TN  
2008 - 2017  
# OF OBSERVATIONS - 130,605  
COVERAGE: 16 KNOTS = 98.74%  
13 KNOTS = 98.55%  
10.5 KNOTS = 97.85%

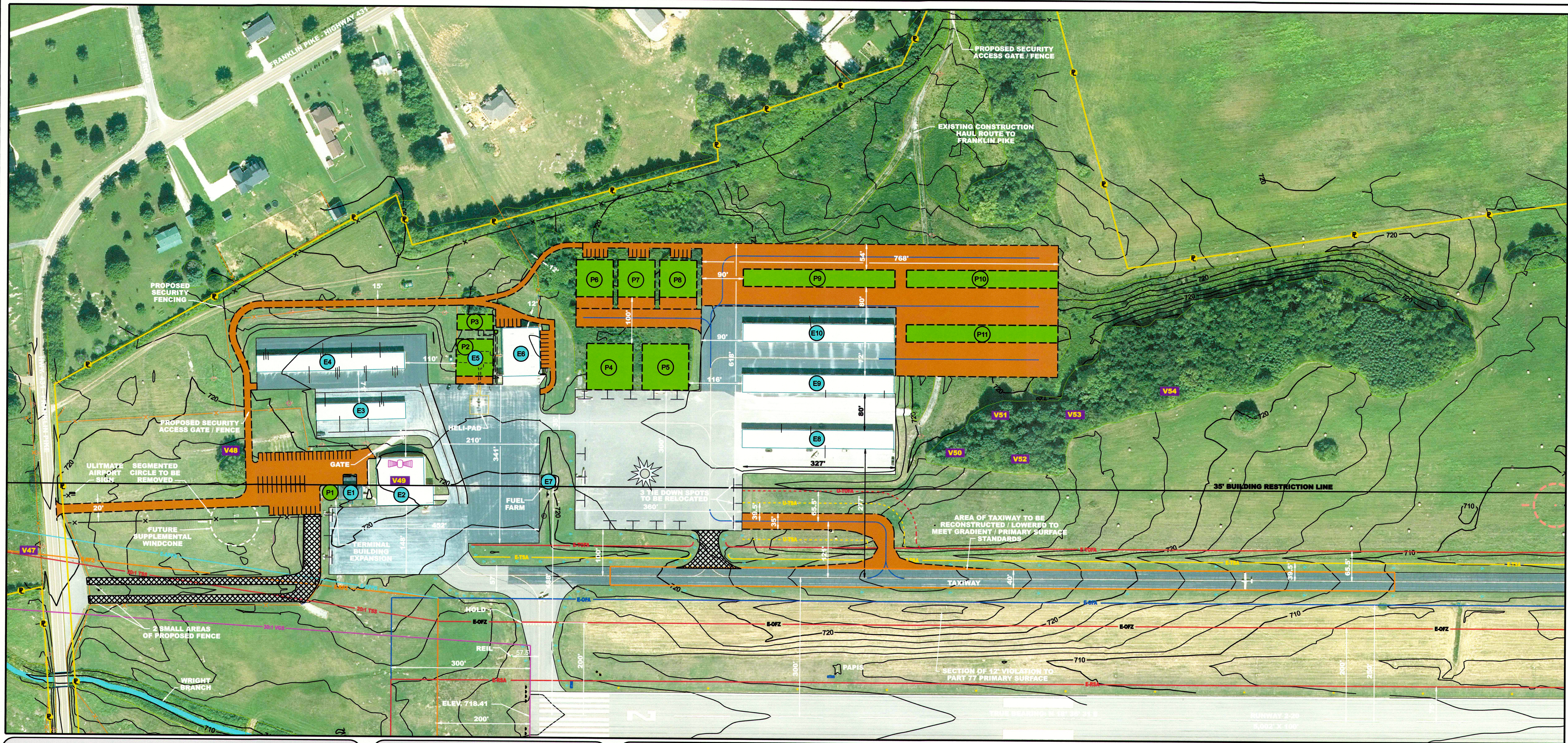


**AIRPORT LAYOUT DRAWING**  
**AIRPORT LAYOUT PLAN SET**  
**ELLINGTON AIRPORT**  
LEWISBURG, MARSHALL COUNTY, TENNESSEE  
T.A.D. NO. 59-555-0146-18

DR.	CHK.	DATE	DESCRIPTION
ES	TO	FEB. 2018	30% REVIEW
ES	TO	MAR. 2019	60% REVIEW
ES	TO	OCT. 2019	90% REVIEW
ES	TO	DEC. 2019	100% REVIEW
ES	TO	DEC. 2019	FINAL

SHEET  
**1**  
PROJECT NO:  
11307-01





EXISTING FACILITIES DATA				
ITEM NUMBER	STRUCTURE	TOP ELEVATION	PENETRATION	PROPOSED ACTION
E1	TERMINAL BUILDING	749.6'	-	-
E2	100' X 100' MAINTENANCE HANGAR	752.5'	4.9'	LIGHT
E3	6 UNIT T-HANGAR	748.5'	-	-
E4	10 UNIT T-HANGAR	738.2'	-	-
E5	AIR EVAC BUILDING	732.9'	-	-
E6	80' X 100' HANGAR	750.6'	-	-
E7	FUEL FARM - 100LL / JET A	732.0'	-	-
E8	10 UNIT T-HANGAR	742.0'	-	-
E9	10 UNIT T-HANGAR	742.5'	-	-
E10	10 UNIT T-HANGAR	742.2'	-	-

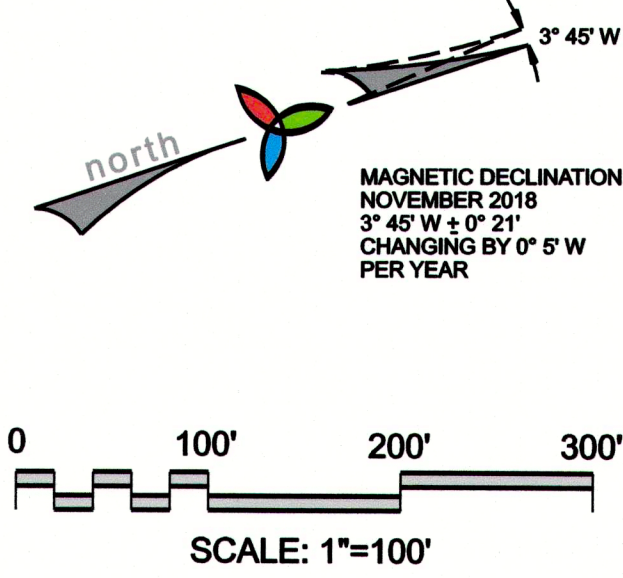
PROPOSED FACILITIES DATA		
ITEM NUMBER	STRUCTURE	EST. TOP ELEVATION
P1	TERMINAL EXPANSION	744.0'
P2	80' X 80' CORPORATE HANGAR	750.0'
P3	AIR EVAC	738.0'
P4	100' X 100' CORPORATE HANGAR	751.0'
P5	100' X 100' CORPORATE HANGAR	751.0'
P6	80' X 80' CORPORATE HANGAR	750.0'
P7	80' X 80' CORPORATE HANGAR	750.0'
P8	80' X 80' CORPORATE HANGAR	750.0'
P9	10 UNIT T-HANGAR	742.0'
P10	10 UNIT T-HANGAR	742.0'
P11	10 UNIT T-HANGAR	742.0'

- NOTES**
1. PROPOSED BUILDING DIMENSIONS AND ELEVATIONS ARE ESTIMATES ONLY.
  2. FINAL CONFIGURATION OF PROPOSED TERMINAL AREA LAYOUT MAY DIFFER.
  3. SEE AFD FOR DETAILS ON OBSTRUCTIONS TO PART 77 SURFACE SHOWN.
  4. ALL EXISTING AND PROPOSED FACILITIES ARE BELOW PART 77 TRANSITIONAL SURFACE.
  5. NO SPECIAL OR NON AERONAUTICAL LAND USES TO SHOW ON AIRPORT PROPERTY.
  6. EXISTING BUILDING #5 AND PROPOSED BUILDING #2 HAVE COINCIDENT LOCATIONS.
  7. EXISTING RUNWAY AND TAXIWAY WIDTHS EXCEED FAA STANDARDS WHICH, WILL REQUIRE ADDITIONAL FUNDING CONSIDERATIONS, PER TAD.

TAXIWAY DATA TABLE		
	FAA STANDARD	EXISTING
TAXIWAY DESIGN GROUP	2	SAME
TAXIWAY / TAXILANE WIDTH	35'	40'
TAXIWAY EDGE SAFETY MARGIN	7.5'	SAME
TAXIWAY SHOULDER WIDTH	15'	SAME
TAXIWAY / TAXILANE SAFETY AREA	79'	SAME
TAXIWAY OBJECT FREE AREA	131'	SAME
TAXILANE OBJECT FREE AREA	115'	SAME
TAXIWAY LIGHTING	MITL	SAME

LEGEND		
	EXISTING	ULTIMATE
RUNWAY CENTERLINE		
RUNWAY SAFETY AREA (RSA)	E-RSA	U-RSA
RUNWAY OBJECT FREE AREA (ROFA)	E-ROFA	U-ROFA
RUNWAY OBSTACLE FREE ZONE (ROFZ)	E-ROFZ	U-ROFZ
TAXIWAY OBJECT FREE AREA (TOFA)	E-TOFA	U-TOFA
TAXIWAY SAFETY AREA (TSA)	E-TSA	U-TSA
AIRPORT PAVEMENT	SEE PHOTO	
AIRPORT BUILDINGS	SEE PHOTO	
AIRPORT PROPERTY LINE / EASEMENTS		
FENCE		
*GROUND ELEVATIONS CONTOURS	1025	1025
PAVEMENT OR BUILDING TO BE REMOVED		
WINDCONE		
BEACON		
PART 77 VIOLATIONS	V50	

\* 2 - FOOT CONTOUR INTERVAL

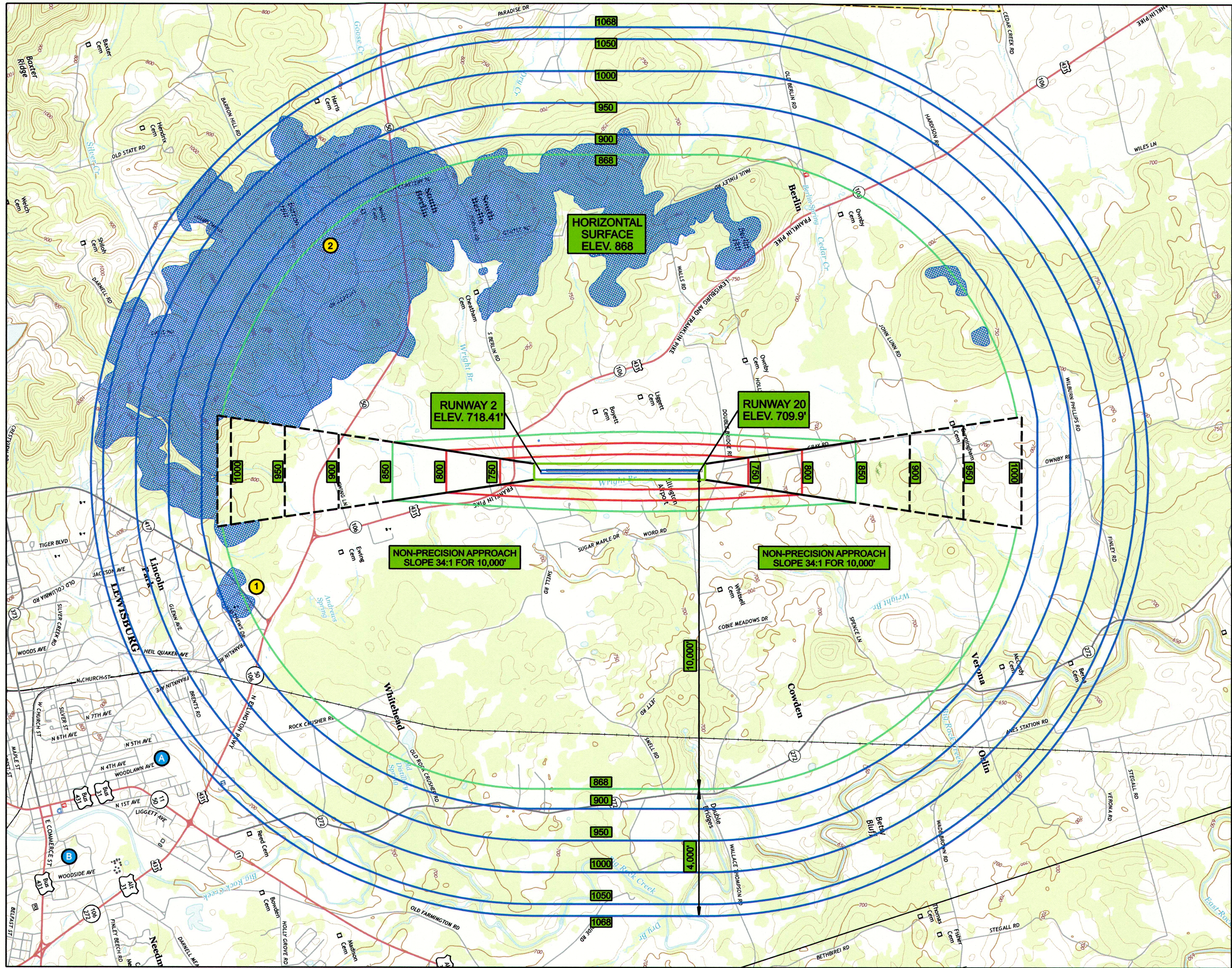


**PDC CONSULTANTS, LLC.**  
133 Holiday Court  
Suite 102  
Franklin, TN 37067  
Phone: (615) 614-0121  
Fax: (615) 614-0124

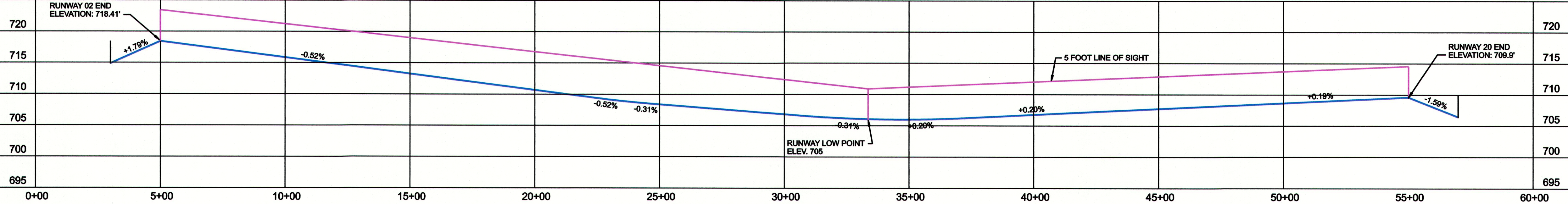
DR.	CHK.	DATE	DESCRIPTION
ES	TO	FEB. 2018	30% REVIEW
ES	TO	MAR. 2019	60% REVIEW
ES	TO	OCT. 2019	90% REVIEW
ES	TO	DEC. 2019	100% REVIEW
ES	TO	DEC. 2019	FINAL

**TERMINAL AREA PLAN**  
**AIRPORT LAYOUT PLAN SET**  
**ELLINGTON AIRPORT**  
LEWISBURG, MARSHALL COUNTY, TENNESSEE  
T.A.D. NO. 59-555-0146-18





PLAN VIEW



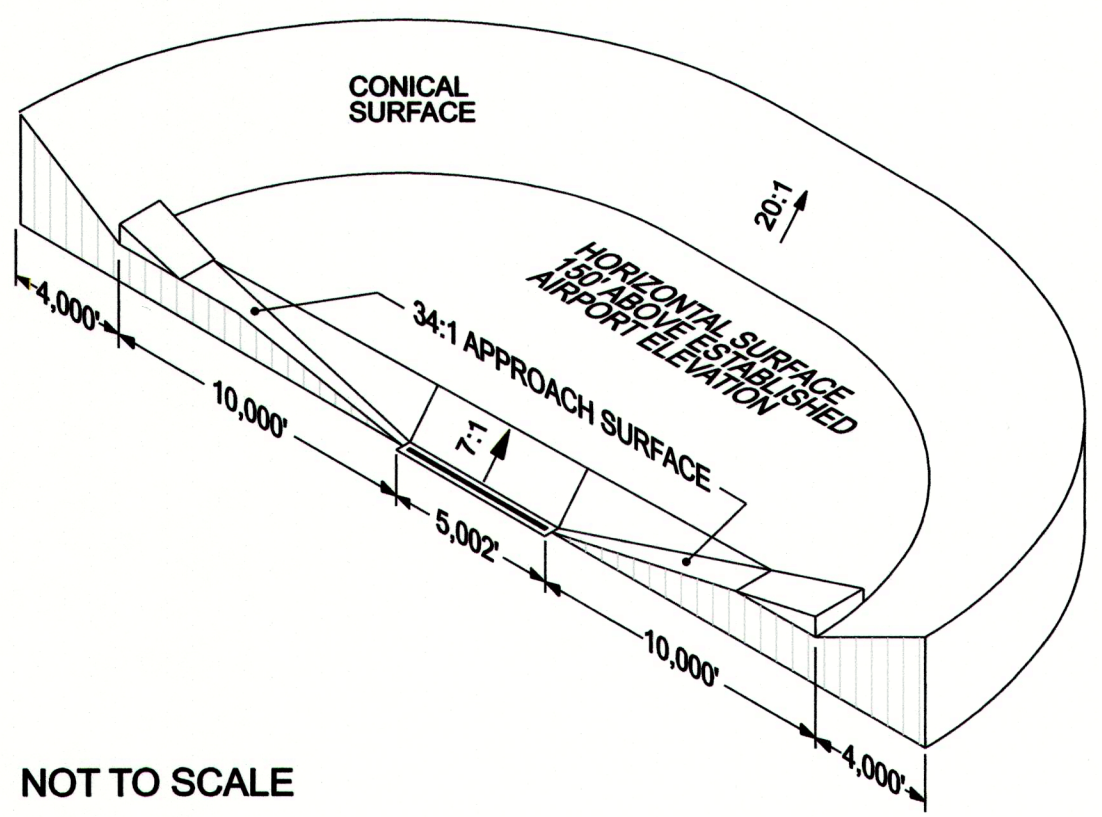
RUNWAY PROFILE

NOT TO SCALE

NOTES

- GRID BASE, U.S.G.S. TOPOGRAPHIC MAPS, 50' CONTOUR INTERVAL. DATE OF MAP: 2016
- IMAGERY.....U.S. NAIP, JUNE 2014
- ROADS.....U.S. CENSUS BUREAU, 2015-2016
- NAMES.....GNIS, 2016
- HYDROGRAPHY.....NATIONAL HYDROGRAPHY DATASET, 2014
- CONTOURS.....NATIONAL ELEVATION DATASET, 2001
- BOUNDARIES.....MULTIPLE SOURCES, SEE METADATA FILES, 1972-2016
- WETLANDS.....FWS NATIONAL WETLANDS INVENTORY, 1977-2014
- SEE AID AND APPROACH PLANS FOR OBSTRUCTIONS WITHIN PRIMARY SURFACE, TRANSITIONAL SURFACES, APPROACH SURFACES, AND HORIZONTAL SURFACE (WITHIN THE LIMITS OF THE AERIAL SURVEY).
- BLUE HATCHING SHOWING TREE OBSTRUCTIONS (ASSUMING 100 FT. TREE HEIGHT) ARE IDENTIFYING AREA BEYOND THE LIMITS OF THE AERIAL SURVEY AND INSIDE THE EXISTING AIRPORT AIRSPACE.
- DATE OF OBSTRUCTION SURVEY USED: AUGUST, 2018.
- RUNWAY HAS NO LINE OF SIGHT VIOLATIONS.
- AIRSPACE SHOWN REFLECTS FAR PART 77 (NP) CRITERIA FOR APPROACHES GREATER THAN 3/4 MILES.
- NO EXISTING MARSHALL COUNTY HEIGHT ZONING IN PLACE.

ISOMETRIC VIEW



NOT TO SCALE

PART 77 OBSTRUCTION

#	DESCRIPTION	TOP ELEVATION	GROUND ELEVATION	PENETRATION	PROPOSED ACTION
1	TOWER	1180'	860'	292'	NONE
2	TOWER	1011'	903'	143'	NONE

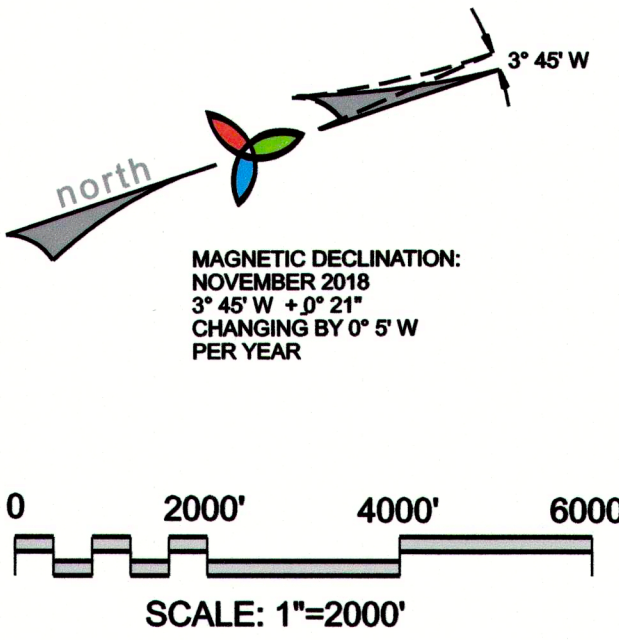
OBSTACLES

ITEMS WITHIN VICINITY OF AIRPORT WITH NO PENETRATION TO PART 77					
#	DESCRIPTION	TOP ELEVATION	GROUND ELEVATION	STRUCTURE HEIGHT	PROPOSED ACTION
A	TOWER	1063'	723'	340'	NONE
B	TOWER	930'	750'	180'	NONE

NOTE: OBSTACLES ARE OUTSIDE OF LUG AIRSPACE.

LEGEND

DESCRIPTION	ULTIMATE
APPROACH SURFACE	-----
APPROACH SURFACE ABOVE HORIZ. SURFACE	-----
CONICAL SURFACE	-----
TRANSITIONAL SURFACE	-----
HORIZONTAL SURFACE	-----
PRIMARY SURFACE	-----
TREE OBSTRUCTION	-----
TOWER (OBSTRUCTION)	-----
TOWER (NO OBSTRUCTION)	-----



PDC CONSULTANTS, LLC.

133 Holiday Court  
Suite 102  
Franklin, TN 37067

Phone: (615) 614-0121  
Fax: (615) 614-0124

DR.	CHK.	DATE	DESCRIPTION
ES	TO	FEB. 2018	30% REVIEW
ES	TO	MAR. 2019	60% REVIEW
ES	TO	OCT. 2019	90% REVIEW
ES	TO	DEC. 2019	100% REVIEW
ES	TO	DEC. 2019	FINAL

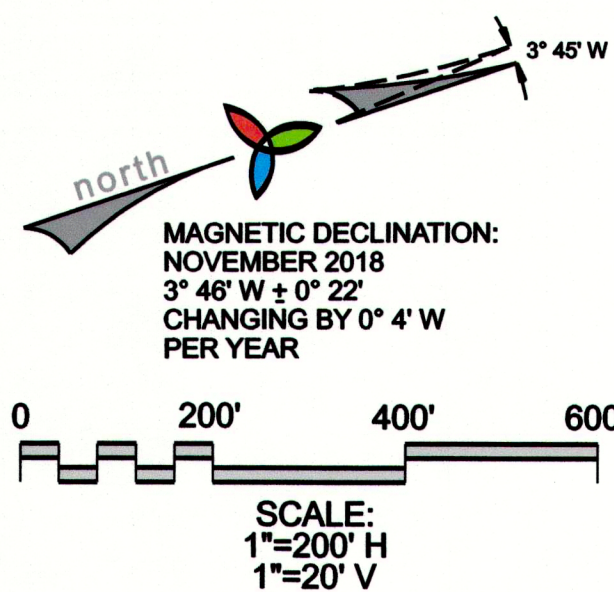
AIRSPACE DRAWING  
AIRPORT LAYOUT PLAN SET  
ELLINGTON AIRPORT  
LEWISBURG, MARSHALL COUNTY, TENNESSEE  
T.A.D. NO. 59-555-0146-18

SHEET

3

PROJECT NO:  
11307-01





PROFILE LEGEND	
SYMBOL	DESCRIPTION
	TREE
	UTILITY POLE
	STRUCTURE
	BUILDING
	ROAD
	CREEK

LEGEND		
	EXISTING	ULTIMATE
RUNWAY CENTERLINE		
RUNWAY SAFETY AREA (RSA)		
RUNWAY OBJECT FREE AREA (ROFA)		
RUNWAY OBSTACLE FREE ZONE (ROFZ)		
RUNWAY PROTECTION ZONE (RPZ)		
FAR PART 77 APPROACH SURFACE		
TAXIWAY OBJECT FREE AREA (TOFA)		
TAXIWAY SAFETY AREA (TSA)		
BUILDING RESTRICTION LINE (35' BRL)		
AIRPORT PAVEMENT		
AIRPORT PROPERTY LINE (FEE SIMPLE)		
AVIGATION EASEMENT		
FENCE		
GROUND ELEVATIONS CONTOURS *		
PART 77 VIOLATIONS		

\* 2-FT CONTOUR INTERVAL

#### NOTES

1. DATE OF AGS SURVEY USED: AUGUST, 2018.
2. NO THRESHOLD SITING SURFACE VIOLATIONS.
3. NO BUILDING PENETRATIONS TO APPROACH SURFACES.
4. OBSTRUCTIONS TO PART 77 SURFACES NOT LIMITED TO VIOLATIONS LISTED.
5. PROPERTY LINE LOCATION SHOWN IS APPROXIMATE.
6. SEE ALD FOR PROPOSED ULTIMATE WINDCONE / SEGMENTED CIRCLE LOCATION.

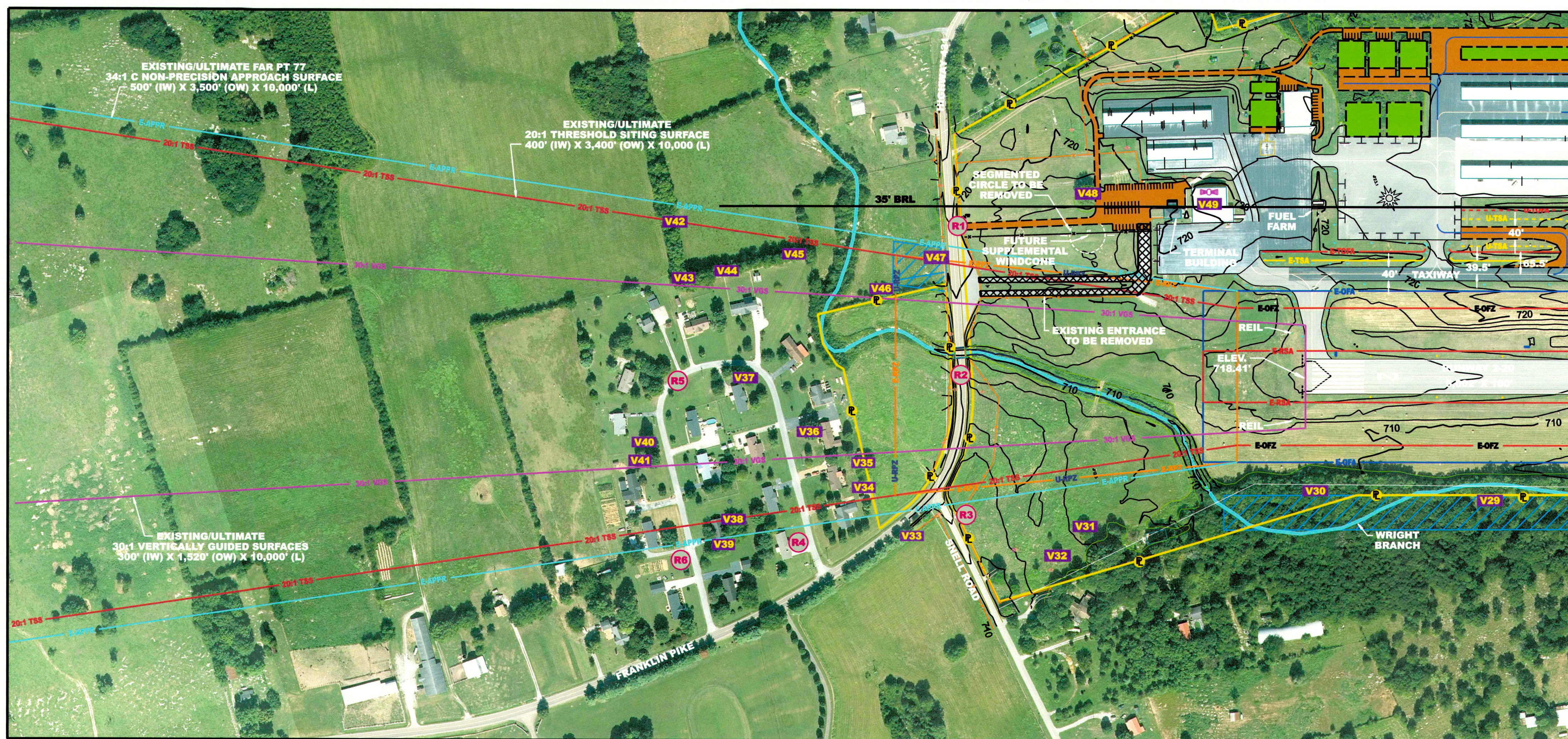
#### TRAVERSE WAY

#	NAME	GROUND ELEVATION (FT.)	* TOP ELEVATION (FT.)	APPROACH SURFACE ELEVATION (FT.)	PENETRATION (FT.)	PROPOSED ACTION
R1	FRANKLIN PIKE	721.4'	736.4'	745.3'	NONE	NONE
R2	FRANKLIN PIKE	718.3'	733.3'	742.1'	NONE	NONE
R3	FRANKLIN PIKE	718.1'	733.1'	742.9'	NONE	NONE
R4	HORSESHOE DR.	720.0'	735.0'	755.4'	NONE	NONE
R5	HORSESHOE DR.	724.0'	739.0'	766.1'	NONE	NONE
R6	HORSESHOE DR.	723.0'	738.0'	765.4'	NONE	NONE

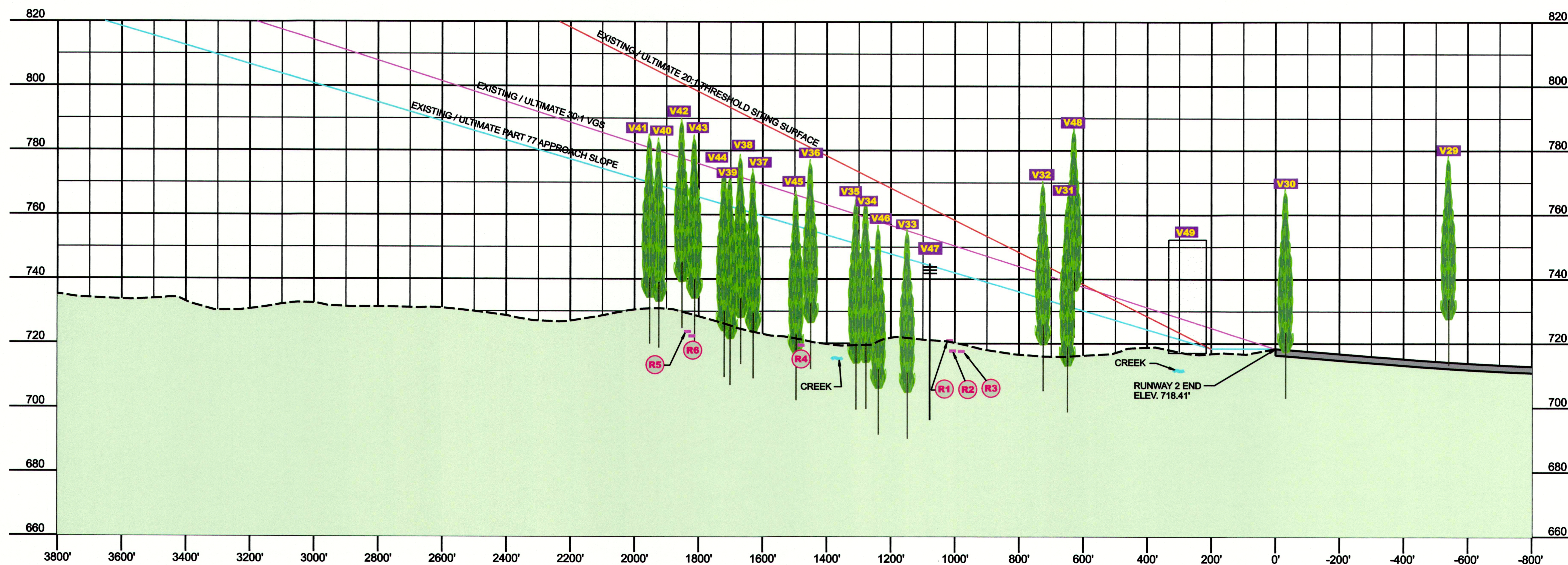
\*15' ADDED FOR ROAD CLEARANCE

#### OBSTRUCTION DATA

PT 77 - 7:1 TRANSITIONAL SURFACE (TS), 34:1 APPROACH SURFACE (AS)					
V#	DESCRIPTION	OBJECT ELEVATION	34:1 SURFACE VIOLATION	30:1 VGS SURFACE VIOLATION	PROPOSED DISPOSITION
V29	TREE (TS)	779.29'	42.09'	-	TRIM / REMOVE
V30	TREE (TS)	768.30'	36.78'	-	TRIM / REMOVE
V31	TREE (TS)	763.10'	13.28'	-	TRIM / REMOVE
V32	TREE (TS)	771.03'	19.20'	-	TRIM / REMOVE
V33	TREE (TS)	756.36'	3.76'	-	TRIM / REMOVE
V34	TREE (AS)	765.86'	15.15'	-	TRIM / REMOVE
V35	TREE (AS)	765.85'	15.47'	-	TRIM / REMOVE
V36	TREE (AS)	777.63'	22.56'	17.66'	TRIM / REMOVE
V37	TREE (AS)	774.12'	12.82'	7.09'	TRIM / REMOVE
V38	TREE (AS)	779.03'	17.38'	-	TRIM / REMOVE
V39	TREE (TS)	772.34'	4.87'	-	TRIM / REMOVE
V40	TREE (AS)	784.06'	15.31'	8.58'	TRIM / REMOVE
V41	TREE (AS)	785.22'	16.08'	9.30'	TRIM / REMOVE
V42	TREE (AS)	790.50'	23.07'	-	TRIM / REMOVE
V43	TREE (AS)	785.40'	20.56'	-	TRIM / REMOVE
V44	TREE (AS)	774.55'	14.09'	-	TRIM / REMOVE
V45	TREE (AS)	767.99'	12.77'	-	TRIM / REMOVE
V46	TREE (AS)	757.11'	5.57'	-	TRIM / REMOVE
V47	UTILITY POLE	744.93'	1.44'	-	RELOCATE / LOWER
V48	TREE (TS)	787.14'	30.18'	-	TRIM / REMOVE
V49	BUILDING	752.50'	4.93'	-	LIGHT



PLAN VIEW



PROFILE VIEW



PDC CONSULTANTS, LLC.

133 Holiday Court  
Suite 102  
Franklin, TN 37067

Phone: (615) 614-0121  
Fax: (615) 614-0124

DR.	CHK.	DATE	DESCRIPTION
ES	TO	FEB. 2018	30% REVIEW
ES	TO	MAR. 2019	60% REVIEW
ES	TO	OCT. 2019	90% REVIEW
ES	TO	DEC. 2019	100% REVIEW
ES	TO	DEC. 2019	FINAL

INNER APPROACH 2 SURFACE DRAWING

AIRPORT LAYOUT PLAN SET  
ELLINGTON AIRPORT

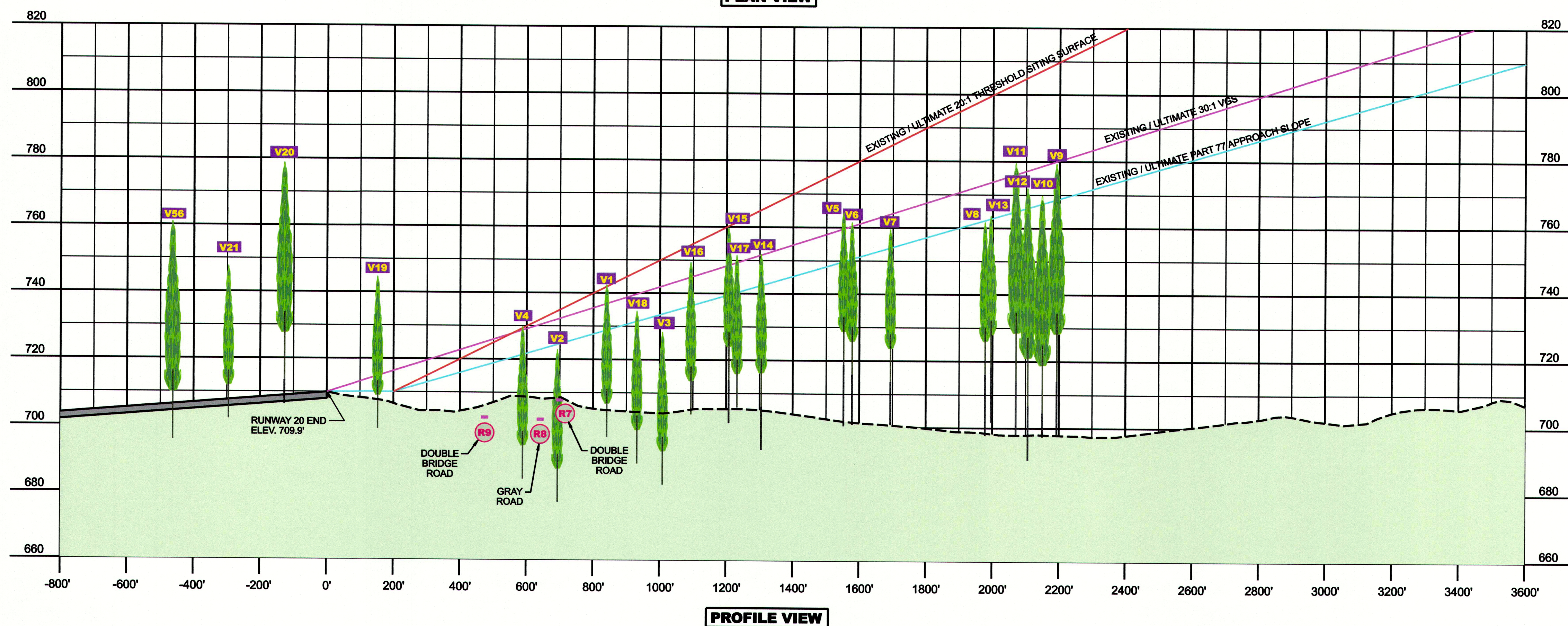
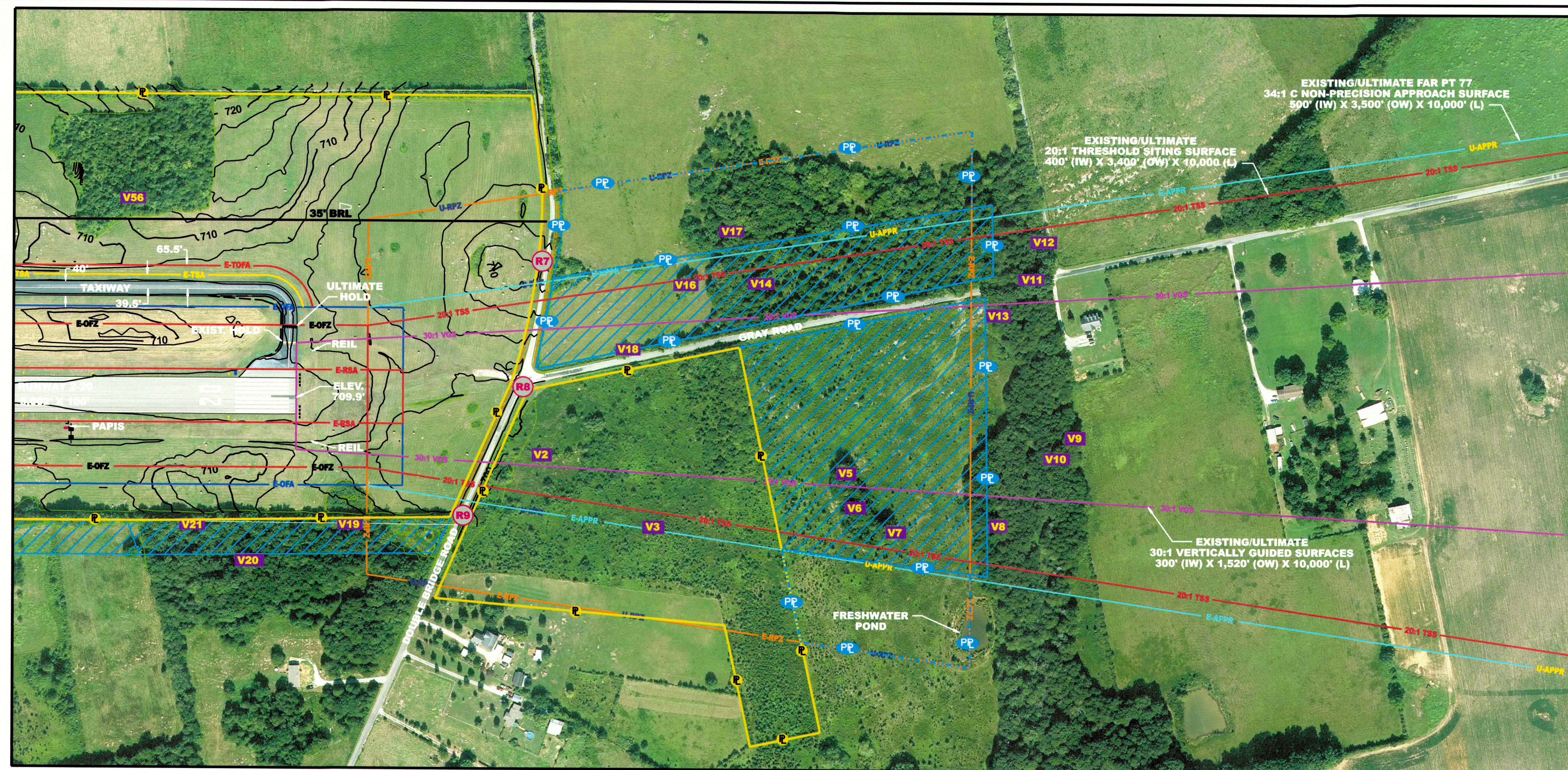
LEWISBURG, MARSHALL COUNTY, TENNESSEE  
T.A.D. NO. 59-555-0146-18


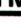

SHEET

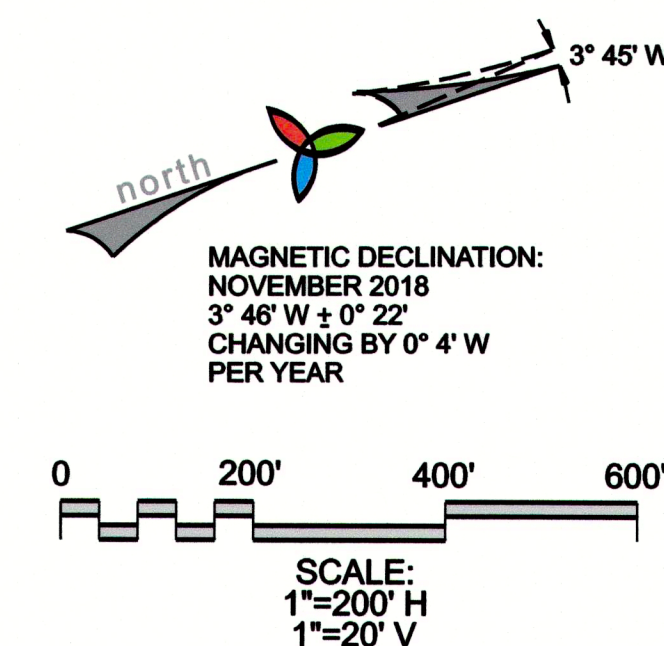
4

PROJECT NO:  
11307-01





PROFILE LEGEND	
SYMBOL	DESCRIPTION
	TREE
	BUILDING
	ROAD



LEGEND		
	EXISTING	ULTIMATE
RUNWAY CENTERLINE		
RUNWAY SAFETY AREA (RSA)		
RUNWAY OBJECT FREE AREA (ROFA)		
RUNWAY OBSTACLE FREE ZONE (ROFZ)		
RUNWAY PROTECTION ZONE (RPZ)		
FAR PART 77 APPROACH SURFACE		
TAXIWAY OBJECT FREE AREA (TOFA)		
TAXIWAY SAFETY AREA (TSA)		
BUILDING RESTRICTION LINE (35' BRL)		
AIRPORT PAVEMENT		
AIRPORT PROPERTY LINE (FEE SIMPLE)		
AVIGATION EASEMENT		
FENCE		
GROUND ELEVATIONS CONTOURS *		
PART 77 VIOLATIONS		

\* 2-FT CONTOUR INTERVAL

## NOTES

1. DATE OF AGS SURVEY USED: AUGUST, 2018.
2. NO THRESHOLD SITTING SURFACE VIOLATIONS.
3. NO BUILDING PENETRATIONS TO APPROACH SURFACES.
4. OBSTRUCTIONS TO PART 77 SURFACES NOT LIMITED TO VIOLATIONS LISTED.
5. PROPERTY LINE LOCATION SHOWN IS APPROXIMATE.
6. SEE ALD FOR PROPOSED ULTIMATE WINDCONE / SEGMENTED CIRCLE LOCATION.

## TRAVERSE WAY

#	NAME	GROUND ELEVATION (FT.)	* TOP ELEVATION (FT.)	APPROACH SURFACE ELEVATION (FT.)	PENETRATION (FT.)	PROPOSE ACTION
R7	DOUBLE BRIDGE RD.	708.4'	723.4'	724.4'	NONE	NONE
R8	GRAY ROAD	702.6'	717.6'	722.4'	NONE	NONE
R9	DOUBLE BRIDGE RD.	702.8'	717.8'	717.9'	NONE	NONE

\* 15' ADDED FOR ROAD CLEARANCE

## OBSTRUCTION DATA

SECTION SURFACE DATA					
PT 77 - 7.1 TRANSITIONAL SURFACE (TS), 34.1 APPROACH SURFACE (AS)					
V #	DESCRIPTION	OBJECT ELEVATION	34:1 SURFACE VIOLATION	30:1 VGS VIOLATION	PROPOSED DISPOSITION
V1	* TREE (AS)	-	-	-	-
V2	TREE (AS)	723.47'	2.01'	.07'	TRIM / REMOVE
V3	TREE (AS)	727.98'	3.43'	-	TRIM / REMOVE
V4	* TREE (AS)	-	-	-	-
V5	TREE (AS)	763.99'	14.61'	8.97'	TRIM / REMOVE
V6	TREE (AS)	761.78'	11.80'	-	TRIM / REMOVE
V7	TREE (AS)	759.26'	6.29'	-	TRIM / REMOVE
V8	TREE (AS)	761.84'	0.93'	-	TRIM / REMOVE
V9	TREE (AS)	779.07'	10.70'	2.52'	TRIM / REMOVE
V10	TREE (AS)	771.24'	4.21'	3.78'	TRIM / REMOVE
V11	TREE (AS)	780.70'	15.96'	-	TRIM / REMOVE
V12	TREE (AS)	771.92'	6.17'	-	TRIM / REMOVE
V13	TREE (AS)	764.27'	3.40'	.23'	TRIM / REMOVE
V14	TREE (AS)	745.85'	3.56'	-	TRIM / REMOVE
V15	* TREE (AS)	-	-	-	-
V16	TREE (AS)	749.67'	13.30'	-	TRIM / REMOVE
V17	TREE (TS)	751.64'	4.92'	-	TRIM / REMOVE
V18	TREE (AS)	734.39'	3.81'	.68'	TRIM / REMOVE
V19	TREE (TS)	744.96'	18.62'	-	TRIM / REMOVE
V20	TREE (TS)	779.17'	37.73'	-	TRIM / REMOVE
V21	TREE (TS)	749.06'	24.61'	-	TRIM / REMOVE
V56	TREE (TS)	761.20'	5.19'	-	TRIM / REMOVE

\* TREES HAVE SINCE BEEN REMOVED AND ARE NO LONGER VIOLATIONS



**PDC CONSULTANTS, LLC.**

133 Holiday Court  
Suite 102  
Franklin, TN 37067

Phone: (615) 614-0121  
Fax: (615) 614-0124

DR.	CHK.	DATE	DESCRIPTION
ES	TO	FEB. 2018	30% REVIEW
ES	TO	MAR. 2019	60% REVIEW
ES	TO	OCT. 2019	90% REVIEW
ES	TO	DEC. 2019	100% REVIEW
ES	TO	DEC. 2019	FINAL

## INNER APPROACH 20 SURFACE DRAWING

# AIRPORT LAYOUT PLAN SET ELLINGTON AIRPORT

**LEWISBURG, MARSHALL COUNTY, TENNESSEE**  
T.A.D. NO. 59-555-0146-18

SHEET

5

PROJECT NO:  
11307-01



